



CONTESSE

**10.**

**TRENDSETTER**

**Collection**

**JOYCE & JOYCE LINE**

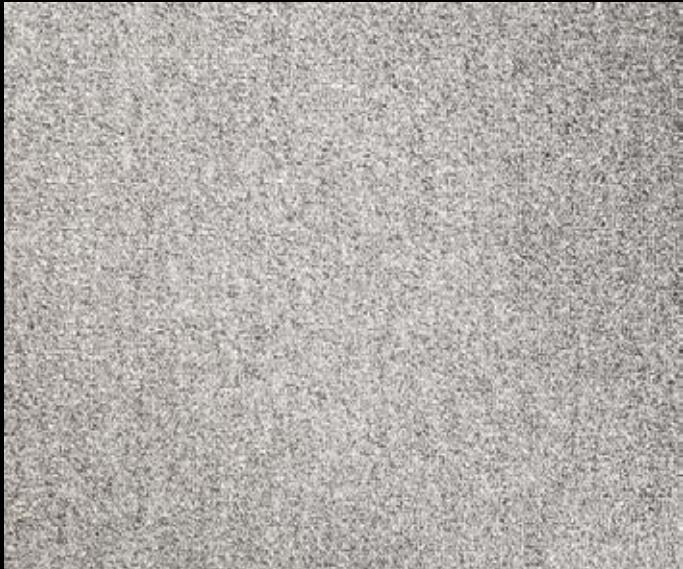
**CARPET TILE**



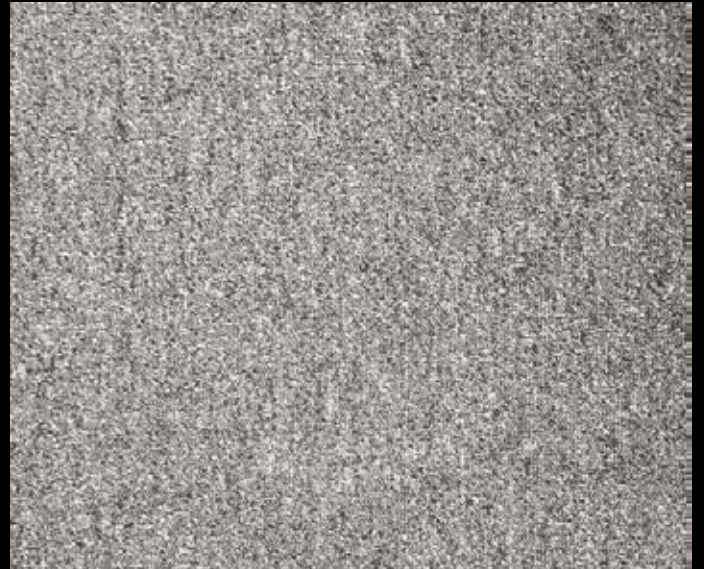
Joyce 3468



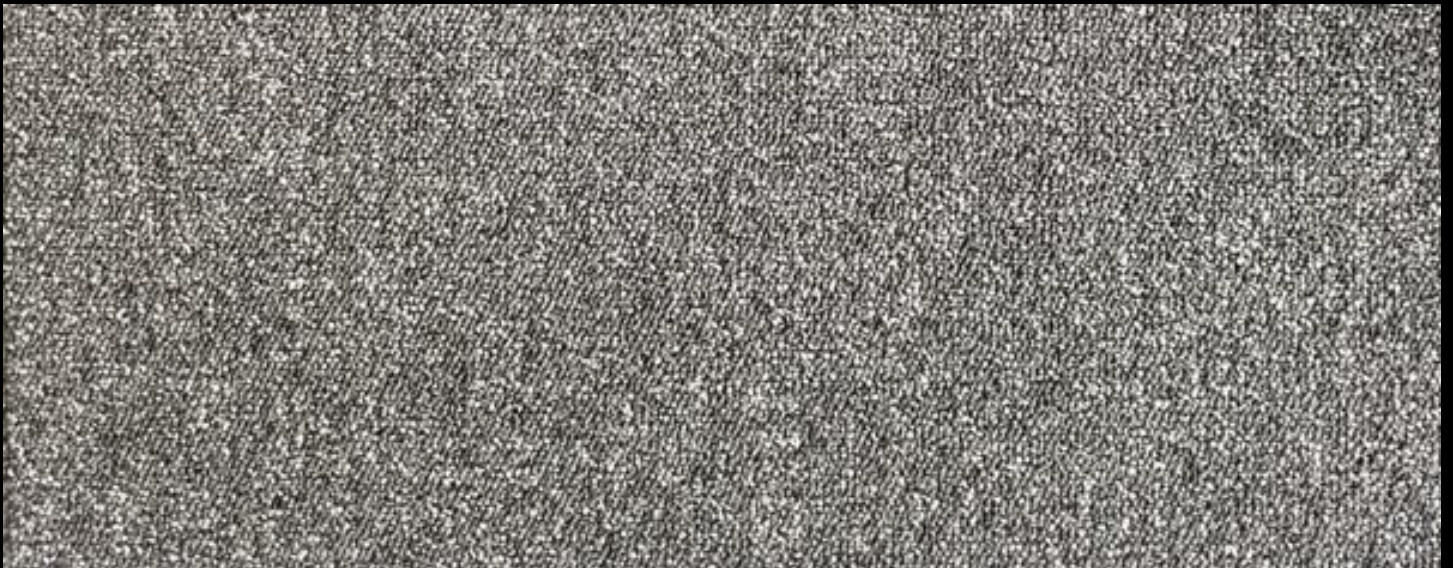
Joyce 3469



Joyce 3472



Joyce 3473



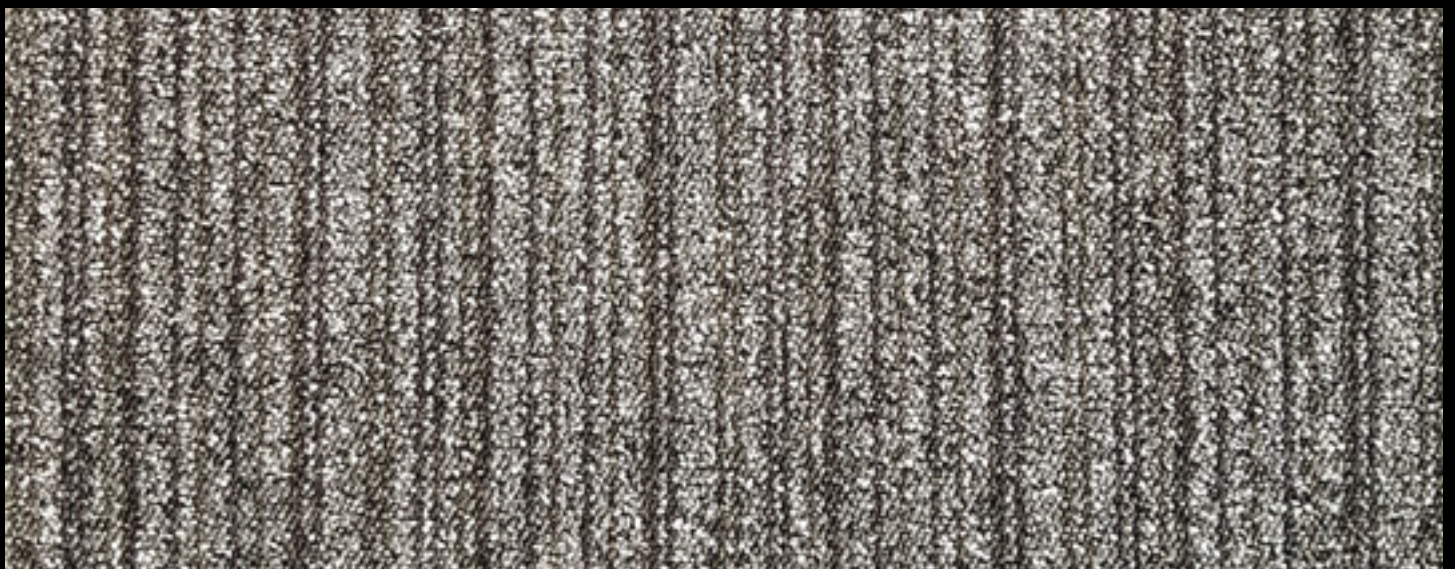
Joyce 3478



Joyce Line **3508**



Joyce Line **3545**



Joyce Line **3578**

|  |  |
|--|--|
| <b>Product Type</b>                    | <b>Tufting</b>   |
| <b>Construction</b>                    | <b>Loop Pile</b>   |
| <b>Size</b>                            | <b>50 x 50 cm</b>  |
| <b>Sqm Per Pack</b>                    | <b>5 m<sup>2</sup></b>   |
| <b>Yarn Type</b>                       | <b>100 % Polyamide</b>   |
| <b>Dye Method</b>                      | <b>Solution Dyed</b>   |
| <b>Gauge</b>                           | <b>1/10</b>  |
| <b>Pile Weight</b>                     | <b>550 gr/m<sup>2</sup></b>  |
| <b>Total Weight</b>                    | <b>4000 gr/m<sup>2</sup></b>   |
| <b>Pile Thickness</b>                  | <b>3.00 mm</b>   |
| <b>Total Thickness</b>                 | <b>5.00 mm</b>   |
| <b>Backing Foundation</b>              | <b>Bithumen</b>  |
| <b>Thermal Isolation ISO 8302</b>      | <b>0.08 m<sup>2</sup> K/W</b>  |
| <b>Flammability</b>                    | <b>Bfls-s1</b>   |
| <b>Color Fastness to Water Rubbing</b> | <b>5</b>   |
| <b>Color Fastness to Light</b>         | <b>&gt;5</b>   |
| <b>Installation</b>                    |   |
| <b>Symbols</b>                         |   |
| <b>CE EN 14041</b>                     |   |
| <b>Emission</b>                        | <br> |